

**Freedom of Information request:** Reference number FOI2025/00050

**Date of request:** 15th January

**Request:**

Please provide  
Detailed floor plans of Woodside station.

Must include all floors and what each room is used for e.g. station office, changing room, gym.

Secondly please provide how many crew based at station split by rank and by watch as well as station commander and any support staff e.g.

Station commander x1  
Cooks x1

Red watch:  
Station officer x1  
Sub officer x1  
Lead firefighter x2  
Fire fighter x7

And the same for the below watches

Blue watch;

White watch;

Green watch

Regards

**Response:**

Thank you for your freedom of information request for floorplans of our fire stations.

I am aware that many floorplans for our fire stations are publicly available where those stations have undergone a recent planning application. That is because fire stations are subject to the Town and Country Planning laws. This has historically always been the case.

You will however be aware of how world security has changed and that the risk to the emergency services has changed and increased. For that reason, we are trying to align ourselves with the guidance of the National Protective Security Authority (NPSA) and in particular their guidance for [security considerations in the planning process](#).

Whilst we make no suggestion that you would use this information for anything other than your own interest, disclosure of this information to you has to be regarded as a disclosure to 'the public at

large'. This information could potentially be obtained and utilised by individuals with malicious intent to cause disruption and subsequent economic damage to our stations and could adversely affect the safety and security of LFB employees and members of the general public.

It is our view that fire stations are an important part of the response to a range of threats that face Londoners (and the public nationally) and that our response could be compromised by those who have a detailed knowledge of the layout and functional purpose of those stations. We are taking steps to have future planning applications for fire stations considered under the same guidance that exists for crown premises and other buildings that are part of the critical national infrastructure which would see that sensitive information is kept separately from the main planning register (as [this guidance](#) suggests). Until that time, we are unwilling to make the plans we hold, which are not already otherwise accessible, available under the freedom of information provisions.

This being the case, we consider the plans we hold to be exempt from [FOIA under Section 24 – National security](#). Section 24(1) allows a public authority not to disclose information where they consider that releasing the information would make the UK or its citizens more vulnerable to a national security threat. As the NPSA's guidance notes *"The positioning of buildings relative to their environs, and the layout and design of the space in and around them, can make these places less vulnerable to terrorist attack and, should an attack take place, better protect people from its impact"*. We therefore take the view that the Section 24 (1) exemption applies on the basis that withholding the information is "required for the purposes of safeguarding national security".

Required is taken to mean that the use of the exemption is reasonably necessary.

As Section 24 is a qualified and prejudice-based exemption we are required to consider the public interest in any refusal. The ICO defines the public interest here to mean the public good, it is not what is of interest to the public, or the private interests of a requester. We recognise the need for openness and transparency by public authorities, but in this instance, we feel that ensuring the protection of our staff, property, equipment, and the public at large puts the balance in favour of withholding the information.

Turning to the second part of your request please see the attached information on the appliance crewing for normal crewing levels for each main type of LFB appliance including fire station numbers

We have dealt with your request under the Freedom of Information Act 2000. For more information about this process please see the guidance we publish about making a request on our website: <https://www.london-fire.gov.uk/about-us/transparency/request-information-from-us> We have dealt with your request under the Freedom of Information Act 2000. For more information about this process please see the guidance we publish about making a request on our website:

<https://www.london-fire.gov.uk/about-us/transparency/request-information-from-us>

# Appliance crewing and fire station staffing

## Normal crewing of main appliance types

The normal crewing levels for each main type of LFB appliance is as follows:

Type of appliance	Normal riders
Pump Ladder	5
Pump	4
Aerial (Turntable Ladder, Hydraulic Platform, Aerial Ladder Platform)	2
Fire Rescue Unit (FRU)	4
Command Unit (CU)	3
Fireboat	5
Operational Support Unit (OSU)	1
Fire Investigation Unit	1

## Fire station staffing

We determine the actual numbers of staff required at each station depending on the 'normal riders' for different appliances based at each station and taking account of staff when on leave, sick, or undertaking training.

On the LFB website are example structure chart for three types of fire station which provide some general information about the numbers staff required for four watches at each station:

- **A fire station with one fire engine** – [here](#).
- **A fire station with two fire engines** – [here](#).
- **A fire station with two fire engines, and two special appliances** – [here](#).

The combination of fire engines and special appliances gives rise to the following watch staffing at fire stations (as summarised in this table).

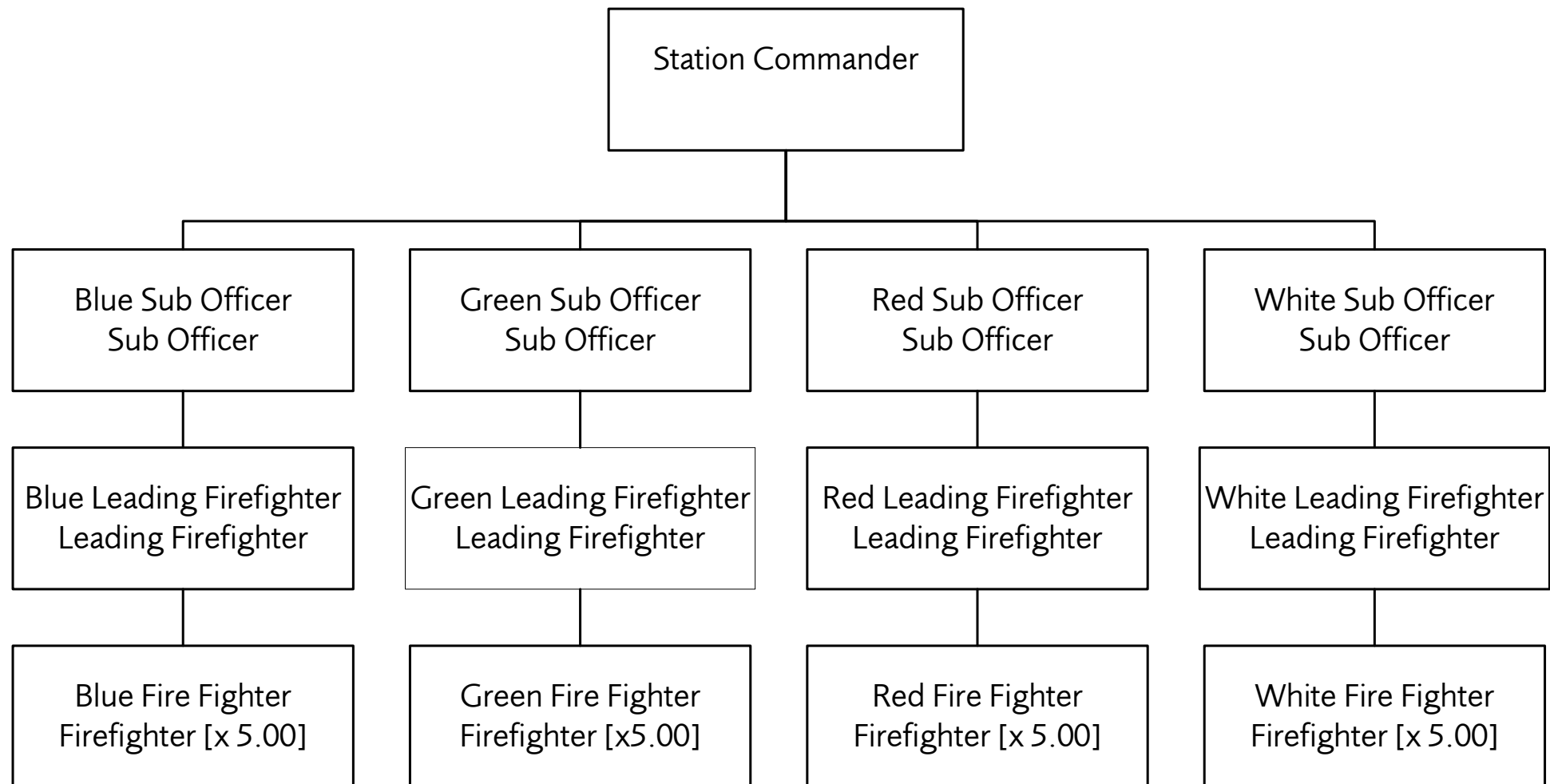
Appliances at each station	On each watch				Total for each watch
	Station Officer	Sub Officer	Leading Firefighter	Firefighter	
2 x fire engine, 1 x Aerial, 1 x Fire Rescue Unit (FRU)	1	1	4	16	22
2 x fire engine, 1 x FRU	1	1	3	15	20
1 x fire engine, 1 x Aerial, 1 x FRU	1	1	3	12	17
2 x fire engine, 1 x Aerial	1	1	2	11	15
1 x fire engine, 1 x FRU / 2 x fire engine, 1 x OSU	1	1	2	10	14
2 x fire engine	1	1	2	8	12
1 x fire engine, 1 x CU	1	1	3	6	11
1 x fire engine, 1 x OSU	1	1	2	7	9
1 x fire engine	0	1	1	5	7

\* excludes Station Commander

## LFB operational and non-operational vehicles

The LFB publish a fleet list online via the London Datastore [here](#). We do not publish the numbers of different appliances located at each fire station. This fleet list provides details of our large number of emergency (operational) and non-operational vehicles. There is no identifier in this that will tell you at which fire station a specific appliance is located.

# Fire Station with 1 Fire Engine



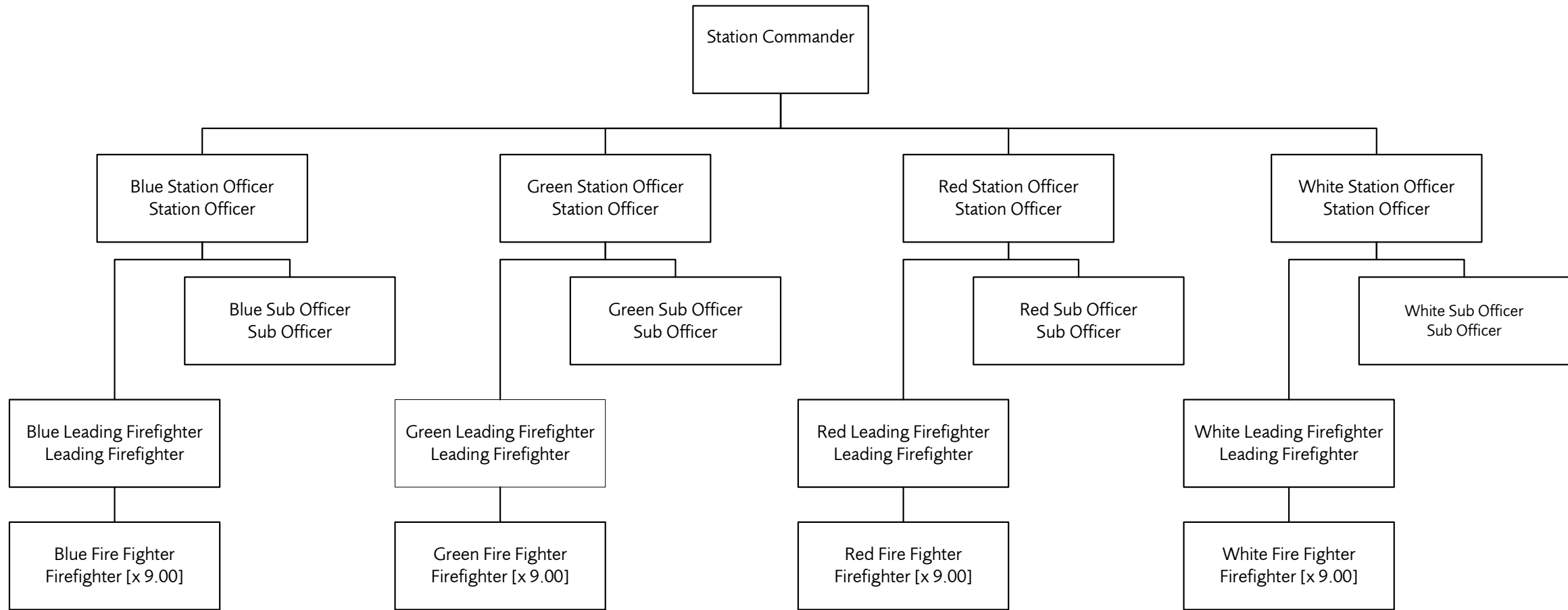
The above structure applies to the following stations with 1 fire engine:

Acton, Biggin Hill, Chingford, Chiswick, Deptford, Dockhead, Dowgate, Eltham, Erith, Fulham, Hainault, Harold Hill, Harrow, Heathrow, Holloway, Hornchurch, Kensington, Leyton, Leytonstone, Mill Hill, Millwall, Mitcham, New Cross, New Malden, Peckham, Purley, Richmond, Romford, Shadwell, Shoreditch, Southgate, Surbiton, Wallington, Whitechapel, Willesden and Woodside.

**This structure does not apply to any stations with additional specialist appliances.**

October 2019

# Fire Station with 2 Fire Engines



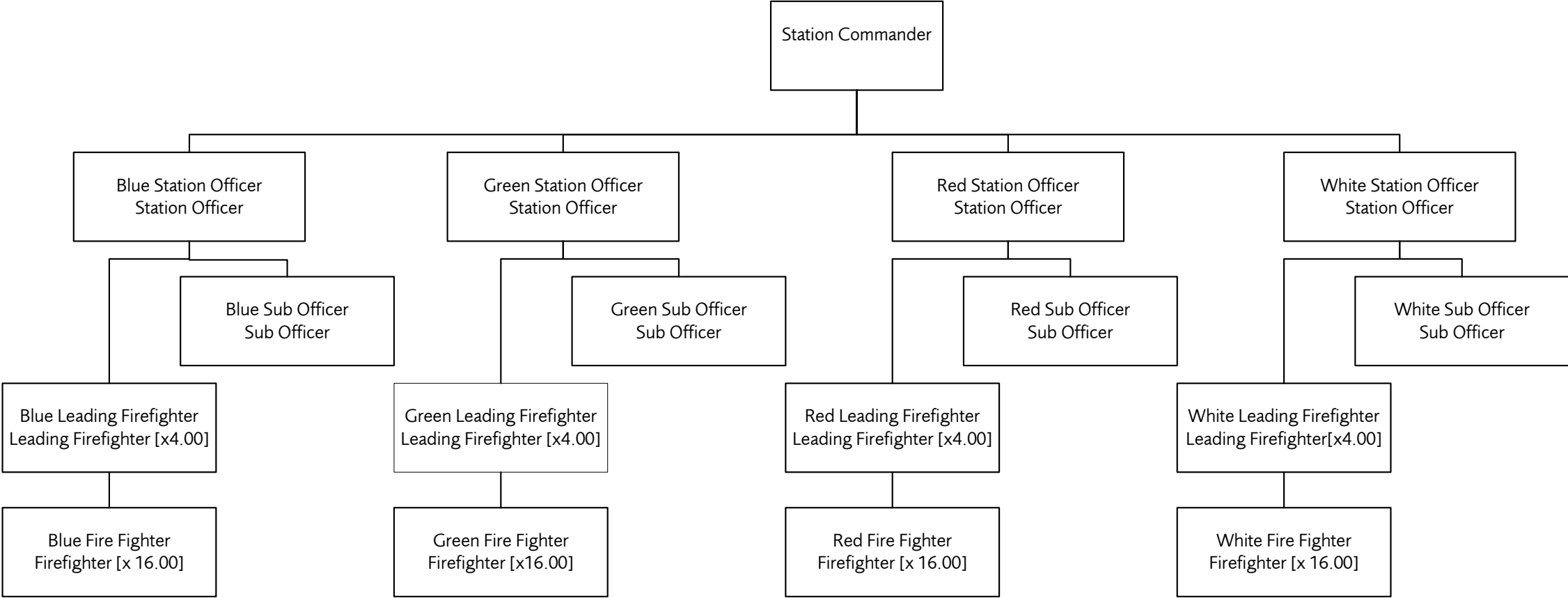
The above structure applies to the following stations with 2 fire engines:

Addington, Brixton, Bromley, Enfield, Feltham, Hendon, Hillingdon, Homerton, Hornsey, Ilford, Kentish Town, Kingston, Lambeth, Norbury, North Kensington, Northolt, Orpington, Plumstead,, Sidcup, Southall, Stoke Newington, Tooting, Walthamstow, West Hampstead, West Norwood.

**This structure does not apply to any stations with additional specialist appliances.**

October 2019

# Fire Station with 2 Fire Engines, 1 Aerial Appliance, and 1 Fire Rescue Unit



The above structure is an example of a multi appliance station

October 2019